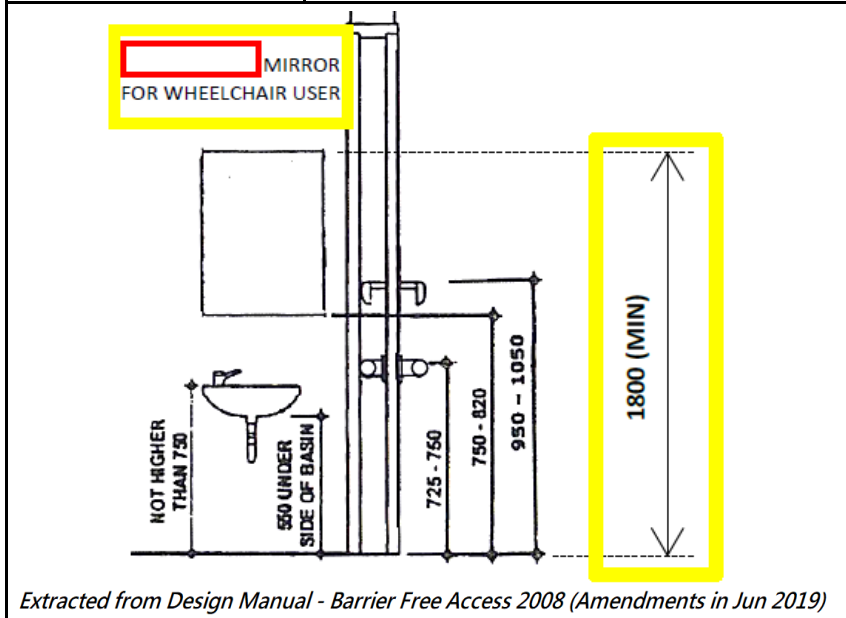




PROJECT		REF		REV	ITEM CODE	
LOCATION		DATE			PAGE	

SANITARY WARE SPECIFICATION SHEET

Item Descriptions	EMCA (PRC) Wall mounted R100 round corner 5mm "tempered glass" mirror with stainless steel frame in grade 304 & earth bonding hole ; protected with back film ; 1000mm x 600mm ; complied with Barrier Free Access 2008 (Amendments in June 2019)	<p>Illustration/ Drawing </p>
Dimensions	L600 x W25 x H1000 mm	
Model	EM7044.097	
Frame material	Stainless Steel Gauge 304	
Manufacturer	EMCA (PRC)	
Source	Acme Sanitary Ware Co. Ltd Mr. Eric Wong/ Mr. Don Yuen	
Contact Tel/Fax	(852) 2388-7171 / (852) 2710-8012	
E-mail	acme@acmesanitary.com.hk	
Website	www.acmesanitary.com.hk	



Note:

* All information of the above is for the reference only. No prior notice is made if any changes.